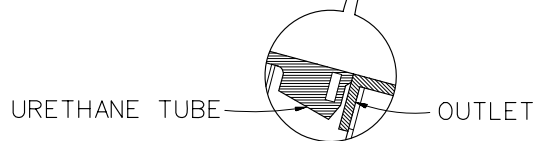
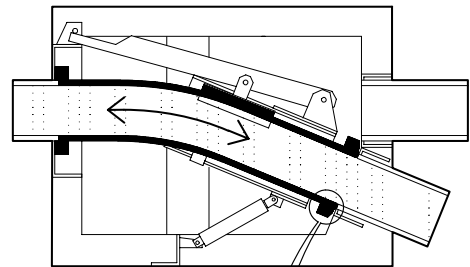
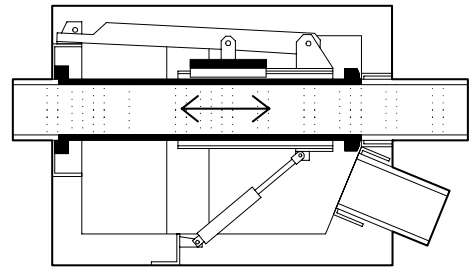
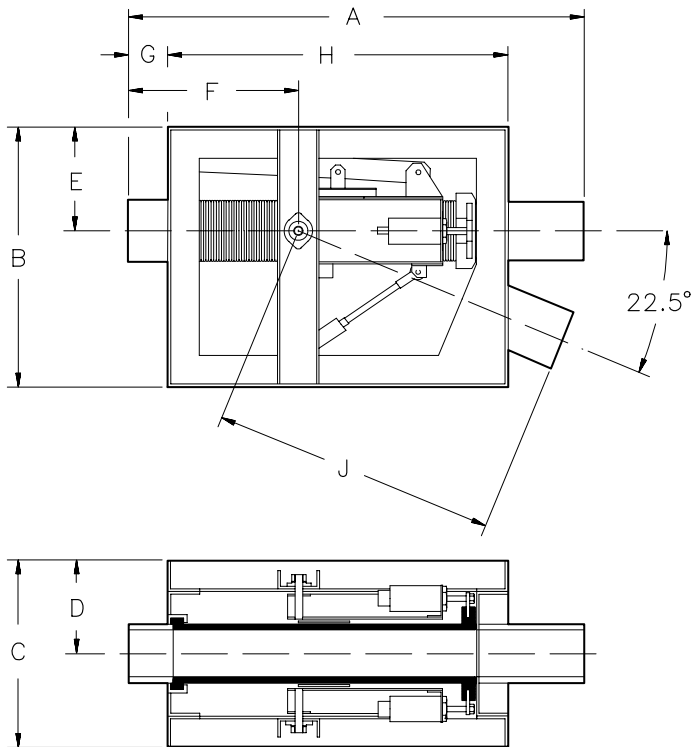


# TWO-WAY LINE SWITCH HEAVY DUTY 22 1/2° MODEL 241 & 266



THE **NOL-TEC** TWO-WAY SWITCH IS DESIGNED FOR TROUBLE-FREE CONVEYING OF DRY MATERIALS IN PNEUMATIC CONVEYING SYSTEMS.

Model	Size	A	B	C	D	E	F	G	H	J	Ship Wt. (lbs)
266	2" & 3"	32"	22"	15"	7.5"	8.5"	13.12"	3.25"	26"	18.875"	170
241	4" & 5"	40"	25"	18"	9"	10"	16.88"	4"	33.00"	23.13"	300

## STANDARD FEATURES:

- One-piece abrasion resistant urethane tube with integral seal
- Uniform and smooth internal bore minimizes cross contamination
- One positioning air cylinder which selects direction of flow.
- Dual sealing air cylinders provide positive dust-tight operation
- Conveying pressure up to 90 PSIG
- Heavy-duty steel construction
- Suitable for either diverging or converging applications
- Electrical components suitable for outdoor service
- Limit switches used to indicate position and sealing functions

## OPTIONAL FEATURES:

- Seals to close off unused conveying line
- Flanged or grooved conveying line connections
- Stainless product contact
- Stainless construction
- Weather protection covers
- Contact NOL-TEC with your special requirements

## SPECIFICATIONS:

- Maximum temperature - 200° F
- Air:
  - Clean and dry at correct pressure dew point
  - 80 PSIG minimum
- Electrical:
  - Solenoid valve - 110-120V, 50/60HZ
  - Limit switch - DPDT, 10 AMP